



圣景创筑

SHENG JING CHUANG ZHU

在主题乐园等旅游
产品的整体设计过程中，
坚持设计产品的前卫时
尚性、娱乐互动性、跨
界创新性和科技知识
性相结合——。

杨华

圣景创筑 SHENGJINGCHUANGZHU

深圳圣景创筑环境艺术设计有限公司成立于2009年，是一家以创想与构筑为己任的设计和工程公司。自成立伊始，圣景创筑依托文旅项目咨询策划、规划设计及艺术工程三大核心业务，逐步发展成集创意服务、运营管理、产品投资为一体的主题娱乐全产业链发展平台。

Founded in 2009, Shenzhen Sungem Create Environmental Art Design Co., Ltd. is a design and engineering company. Since its inception, Sungem Create has built up three core businesses of consulting, design and art engineering, and has gradually developed into a collection of creative services, operation, product investment, and has a wide range of professional cooperation resources covering theme amusement.



COMPANY VISION 公司愿景

创造人类居住、休闲、娱乐环境新境界，让每一个人都能体验人生奇妙的欢乐。
To create a new living, leisure and entertainment experience, an exciting new environment for the whole family.



我们的团队
OUR TEAM



董事长：程波
Chairman: Cheng Bo



总经理：吴娜
General Manager: Anna Wu



公司主要客户
MAIN CLIENTS



1

文旅设计院一分院
CULTURE AND TOURISM
DESIGN STUDIO |

室外设计案例 EXTERIOR DESIGN CASE

BUSINESS SCOPE 业务范围

主题公园项目 THEME PARK

- 华谊兄弟电影世界 Huayi Brothers Movie World
- 光线电影小镇 Enlight Media Movie Town
- 重庆镇魂街 Chongqing Rakshasa Street
- 奥飞世界主题乐园 Alpha World Theme Park
- 中华恐龙园-恐龙宝贝梦幻庄园 China Dinosaurs Park-Neverland
- 海盐山水六旗乐园 Riverside Six Flags Park, Haiyan
- 日照海洋公园 Rizhao Ocean Park
- 航天主题乐园 Aerospace Theme Park
- 皋兰梨园小镇 Gaolan Liyuan Town
- 宁波音乐主题公园 Ninbo Music Town
- 机器人未来世界 Robot Future World
- 广州万达城主题乐园海上丝路区 Guangzhou Wanda Theme Park Maritime Silk Zone
- 万达西双版纳 TH 区 Wanda Xishuangbanna TH Area
- 哈尔滨万达城文化旅游新区 The Culture And Tourism New Area Of HaRBIN Wanda City
- 兰州西部恐龙园 Dinosaur Park In Western Lanzhou
- “桃花岛”主题公园 “TauHua Island” Theme Park
- 航天科技太空港 Aerospace Science Spaceport, Shandong
- 山东广饶孙子文化公园 Guangrao Sun Zi Cultural Park, Shandong
- 海洋欢乐世界主要街区 Happy Ocean World, Hainan
- 常州环球动漫嬉戏谷 Changzhou Joyland

水公园 WATER PARK

- 兰州西部恐龙水乐园 Dinosaur Water Park In The West Of Lanzhou
- 北海第一水乐园 Beihai the First Water Park
- 海洋欢乐世界狂野水世界 Ocean Happy World Wild Water Park
- 富力红树湾湿地公园 R&F Mangrove Bay Wetland Park
- 天津蓟县水世界 TianJin Water Park
- 常州恐龙园鲁布拉水公园 China Dinosaur Park Rubra Water Park

规划类项目 PLANNING

- 重庆世界之河风情度假区 Chongqing world River style resort
- 重庆两江控股圣名世贸城主题公园 Chongqing LiangJiang The Name Of The City Theme Park
- 宿迁动漫产业园 Suqian Animation Industrial Park
- 湖南-中部华天城 Central China Sky City, Hunan
- 乐山侏罗纪主题体验园 LeShan Jurassic Theme Park Experience
- 中部旅游城 Central Tourist City

生态旅游度假项目 ECO TOURISM RESORT

- 常州新龙森林公园 Changzhou Xinlong Forest Park
- 富力月亮湾儿童乐园 R&F MoonBay Children's Park
- 国瑞生态公园 GuoRui Eco Park
- 浙江儿童公园 Children's Park, Zhejiang
- 南浔儿童公园 Nanxun Children Park

主题公园
THEME PARKS

主题商业
THEME MALLS

生态旅游度假区
ECOTOURIAM RESORT

城市娱乐综合体
CITY ENTERTAINMENT COMPLEX

其它旅游度假景区以及大型城市文化广场
OTHER TOURIST RESORT AND
CULTURAL PLAZA ON LARGE SCALE

主题小镇
THEME CITIES AND TOWNS

主题社区
THEME COMMUNITY



设计流程简析 ANALYSIS OF DESIGN FLOW

我们通过对项目所在地的政治、经济环境、历史文化、交通、市场环境、受众群体等诸多因素的数据整理分析，对项目的主题方向、开发目标、建设规模、建设内容、目标客群、投资、盈利模式等作出可行性推导。为业主对项目的开发建设提供决策依据。

We analyze the project's theme direction, development goal, construction scale, construction content, target customer group, investment, investment and so on through the data analysis of the political, economic environment, historical culture, traffic, market environment, Profit model to make a feasibility study. For the owners of the project development and construction to provide decision-making basis.

总体策划设计



根据策划设计中可行性分析得出的大数据，依托投资控制、用地现状、目标客群的定位等对红线范围内的建设内容进行控制性详细规划，我们将从运营的角度出发提供全面的落地性规划设计成果，其中包含项目主题故事、规划平面、鸟瞰效果、分区主题氛围效果、投资估算、经济技术指标等核心内容。

According to the planning data from the feasibility analysis of the design, relying on investment control, land status, targeting the target group on the red line within the scope of the construction of the control details of the plan, we will provide a full operational point of view landing Planning and design achievements, including the project theme story, planning plane, bird's-eye effect, sub-regional theme atmosphere effect, investment estimates, economic and technical indicators and other core content.

概念规划设计



方案设计是对概念规划设计的落地深化，我们将对项目范围内的主题包装、主题景观提出详细的方案图纸，并提交建筑条件图纸满足建筑结构设计要求，同时满足项目报规的需要。在综合考虑运营落地及投资的基础上完美实现概念效果。

Project design is the deepening of the concept of planning and design of the floor, we will project the theme of packaging, the theme of the proposed landscape plan detailed drawings, and submit architectural conditions to meet the structural requirements of architectural design, and meet the needs of the project regulations. In a comprehensive consideration of operational landing and investment on the basis of the concept to achieve the perfect effect.

方案设计



深化设计是在建筑结构施工图、市政工程施工图、其他专业单位的相关提资等基础上对主题包装及景观方案进行尺寸及材质的落地性深入设计，此阶段我们将提供各方案元素的详细立面尺寸图、材料清单、结构预埋条件图纸等。

Deepening the design is in the construction of construction drawings, municipal engineering facilities construction plans, other professional units, such as the relevant capital increase on the theme of packaging and landscape program size and material of the floor-depth design, this stage we will provide the elements of the program Detailed elevation drawings, bill of materials, structural conditions, such as embedded drawings.

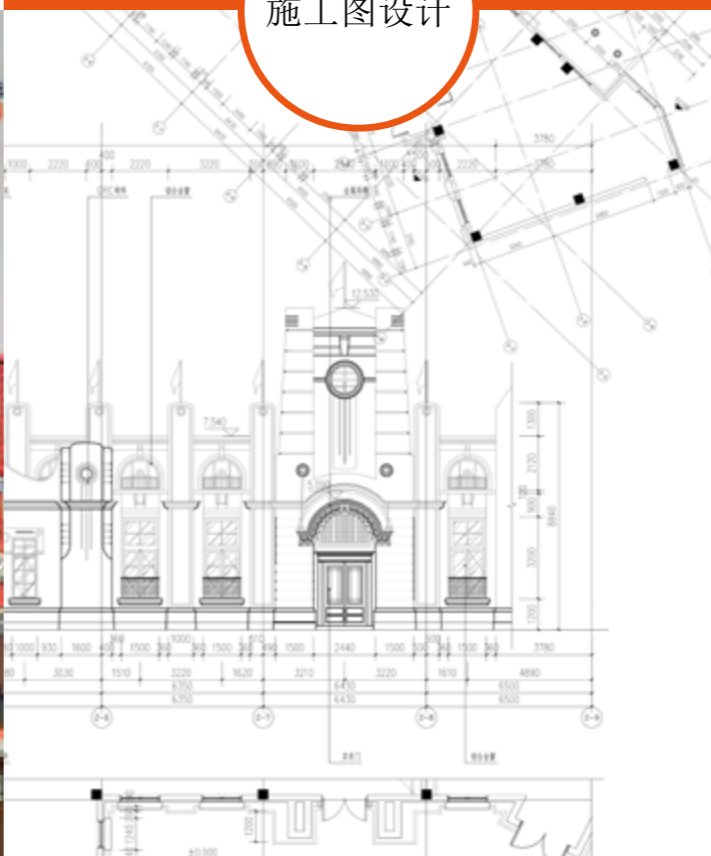
深化设计



圣景创筑具备经验丰富的主题艺术包装施工团队，这也是我们能够完美实现施工图纸设计的因素之一，施工图的设计旨在对各包装及景观元素的细节尺寸、材料及做法进行详细设计，确保方案设计效果与施工效果的高度统一。

With a team of experienced designers, this is one of the factors that enables us to realize the design of construction drawings. The drawings are designed to detail the details of the packaging and landscape elements, materials and practices. To ensure that the effect of program design and construction of a high degree of unity.

施工图设计

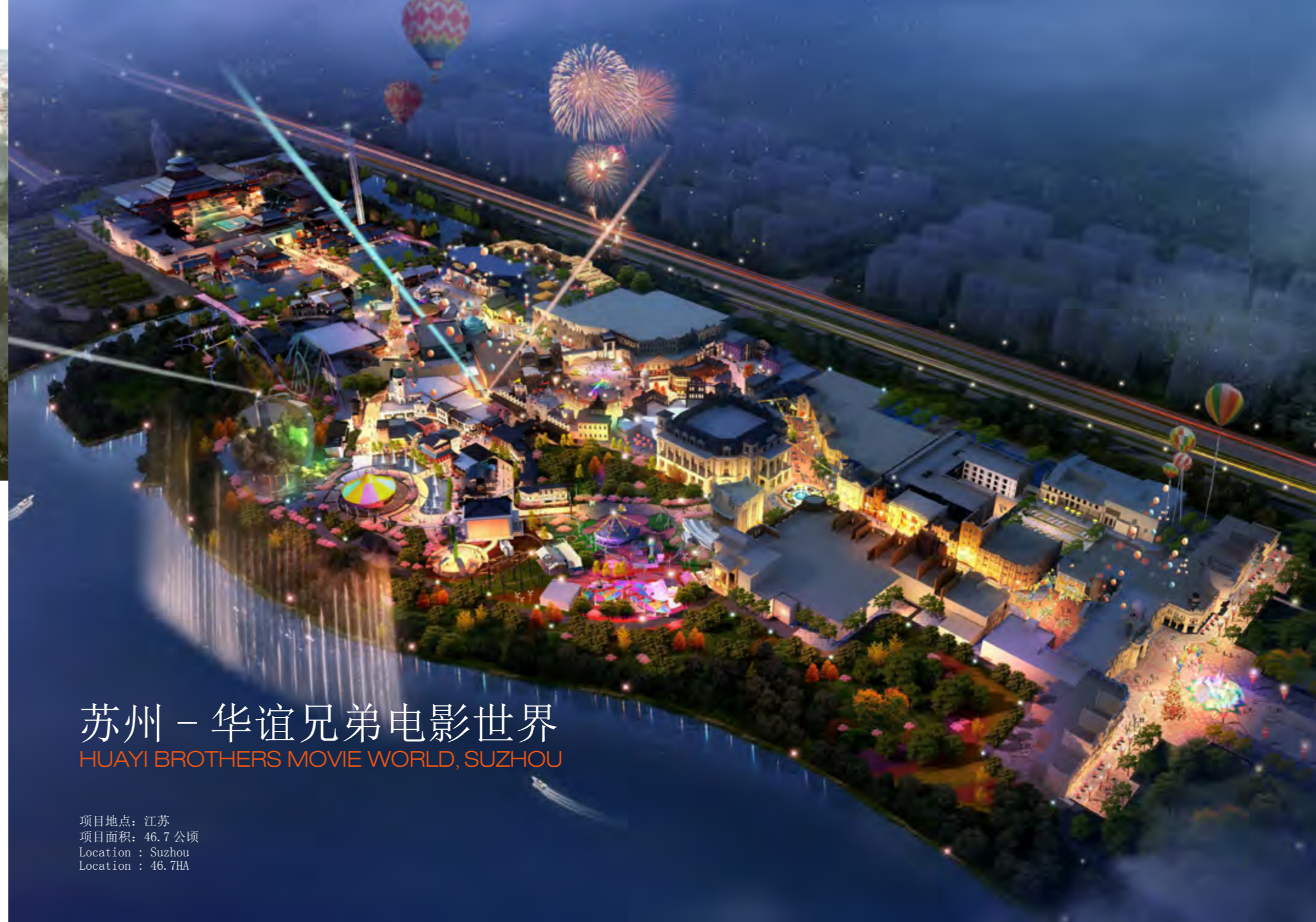


全面履行设计服务，施工期间积极配合业主做好全过程的技术服务工作，通过施工设计技术交底、设计代表现场服务等施工配合服务，为项目顺利施工提供保证。

Fully perform design services, actively cooperate with the owners during the construction of the whole process of technical services, construction design technology through the end of the design on behalf of on-site service and other construction services to provide a guarantee for the smooth construction of the project.

施工配合





苏州 - 华谊兄弟电影世界

以华谊兄弟经典电影为主题,以电影角色体验、互动游戏项目为核心建设的中国(论坛)第一个优秀电影文化创意展示基地、旅游体验基地的华谊影城项目,能让游客零距离体验电影中惊险刺激的一幕幕场景,经历电影中触动心灵的一个个片段,感受电影中经久不衰的一份份感动,探秘电影拍摄中的布景、道具、技巧等。

Huayi Brother Movies Area is a large project serving the function of tourism, recreation and commerce and mainly containing the cultural elements of Huayi movies. It will become the first film cinema project in the country and a movie center integrating culture and tourism and containing the elements of Chinese culture.

苏州 - 华谊兄弟电影世界 HUAYI BROTHERS MOVIE WORLD, SUZHOU

项目地点: 江苏
项目面积: 46.7 公顷
Location: Suzhou
Location: 46.7HA



项目概况:

项目以《镇魂街》漫画、影视作品等为原型，将IP主题化、创意化、空间多元化打造一条集“科技互动娱乐+主题演艺+主题商业”等功能于一体的主题娱乐街区。项目总占地面积约35.7亩，建筑面积2.38万㎡。是中国首次以动漫为主题，打造沉浸式主题娱乐街区。

街区拥有十大主题游乐项目，六大原创主题演艺。所有游乐项目和演艺适合全年龄阶段人群，是一个老少皆宜的主题娱乐街区，同时也适合青少年及粉丝群体“猎奇”和“打卡”。

Project Overview

The project takes the "Rakshasa Street" comics and film as the prototype. Themed and created by its IP, designing an entertainment district that integrates the functions of "technical interactive entertainment + theme perform + theme business". The total area of the project is about 2.38 ha and the building area is 23,800 square meters. It is the first immersive theme entertainment street themed with animation in China.

The street has ten themed rides and six original themed performances. All rides and performs are suitable for all ages visitors. Not only for old and children, but also suitable for teenagers and animation fans to "hunk".

重庆镇魂街

RAKSHASA STREET, CHONGQING

项目地点: 重庆
项目面积: 2.38 公顷
服务阶段: 概念规划
Project Site: Chongqing
Project Area: 2.38 Ha.
Service Content: Concept Planing



项目地点: 常州
 项目面积: 1.66 公顷
 Location : Changzhou
 Landscape Area : 1.66HA

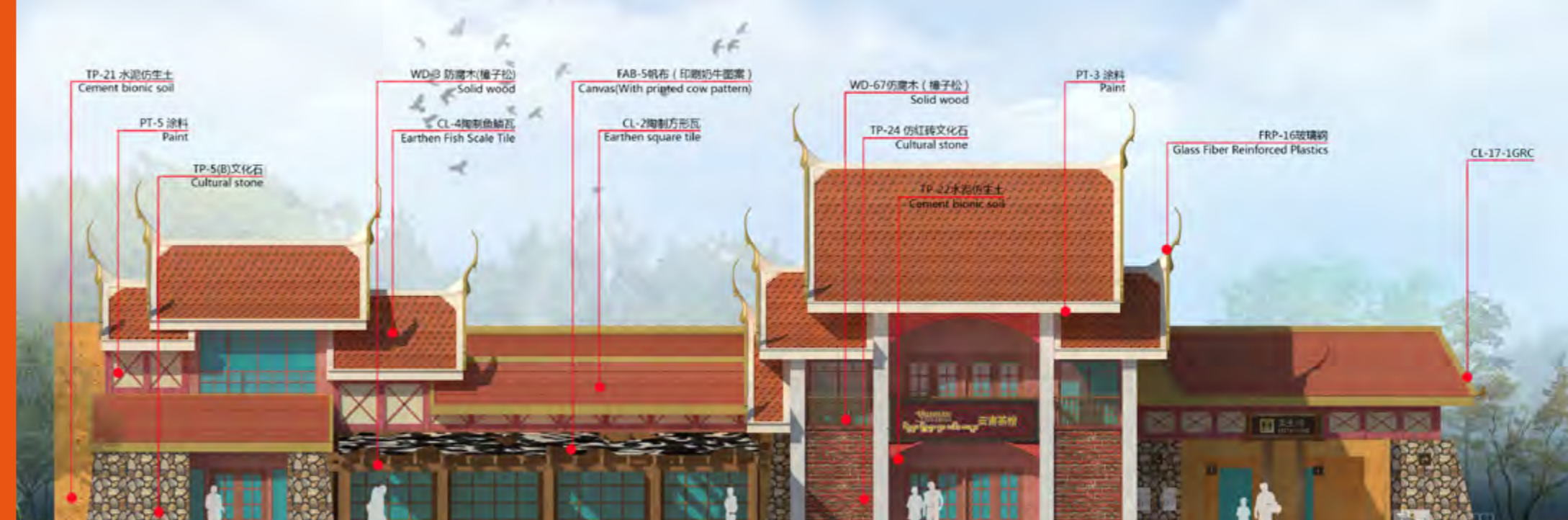
项目概况:
 环球恐龙城隶属于常州恐龙园股份有限公司,经过14年发展,现在是一座集科普、游乐、演艺等于一体的恐龙主题乐园。有东方侏罗纪之称。园区现有六大主题区域、五十多个极限游乐项目、每天十多场各种风格的出园演出。每位游客将回到古老、神秘的侏罗纪时代,中华恐龙园是环球恐龙城的核心景点,经过14年发展,现在是一座集科普、游乐、演艺等于一体的恐龙主题乐园。有“东方侏罗纪”之称。园区现有六大主题区域、五十多个极限游乐项目、每天十多场各种风格的出园演出。每位游客将回到古老、神秘的侏罗纪时代。

Project Overview:
 The Global Dinosaur Town, covering an area of 100 hectares, is a new tourism landmark of East China specially created by the professional Dragon City Tourism Holding Group in 15 years. Located in the very center of Changzhou Creative Industry Base, the town integrates the theme park, culture performance, hot spring, recreational business and animation creation together. It includes finished projects such as China Dinosaur Land, Oak Bay (Golf) Garden Hotel, Water Trip of Three Rivers Three Parks and Dino-valley Hot Spring; and some projects in process like Koooca Suka Canyon City (the third period of the Dinosaur Land) and Dinosaur Town Theater; as well as other projects in plan such as Dino Water Town, Time City, Health Care Center and Commercial Estate.



常州 - 中华恐龙园恐龙宝贝梦幻庄园

DINO TOWN DINOSAUR KINGDOM, CHANGZHOU



万达西双版纳国际度假区主题公园茶马古道 (TH) 区 WANDA XISHUANGBANNA INTERNATIONAL RESORT THEME PARK TEA HORSE ROAD (TH) DISTRICT

佛山 - 机器人未来世界 ROBOT FUTURE WORLD, FOSHAN

海盐山水六旗乐园 RIVERSIDE SIX FLAGS THEME PARK, HAIYAN





马来西亚精灵水公园 ELF WATER PARK, MALAYSIA

兰州 - 西部恐龙水乐园 WESTERN DINOSAUR WATER PARK, LANZHOU



海南 - 海洋欢乐世界狂野水世界 OCEAN HAPPY WORLD WILD WATER PARK



天津 - 蓟县水世界 WATER PARK, TIANJIN



国瑞未来水世界 GLORY FUTURE WATER PARK



重庆 - 两江控股圣名世贸城

SHENGMING WORLD TRADE CITY, CHONGQING LEGION HOLDING

项目概况

该项目位于重庆江北区，离机场仅 10 分钟车程。项目以世界文化为主题，通过建筑、美食、节庆等功能载体以互动娱乐的手法将水公园、儿童乐园、主题商业街、生态园等融合在一起，以全新的互动体验式娱乐综合体的概念带动区域人流、升级产业经济。

Project Overview

The project is located in Jiangbei District, Chongqing, only 10 minutes away from the airport. Project to the cultural world as the theme, through architecture, food, festivals and other function vector approach to interactive entertainment will water park, children's playground, theme commercial street, ecology garden fuses in together, to a new interactive experience type entertainment complex concept driven regional flow, rise industrial economy.



项目地点：重庆市
项目面积：85.3 公顷
Location : Chongqing
Landscape Area : 85.3 ha

项目地点：重庆市
项目面积：104 公顷
Location : Chongqing
Landscape Area : 104 ha

项目概况

项目地块狭长，由一条山谷之中的文化之河串联起世界各大洲代表性的文化、风情，世界之河由此得名。项目以点及面，以休闲生态娱乐的方式将养老、婚庆、运动、主题商业等产业深度系统化，形成以主题娱乐拉动城市片区的西南典范。以低投资、高体验、轻娱乐、重生态的可持续开发方式引领主题娱乐行业网络化 2.0 升级。

Project Overview

Project plots of long and narrow, from a valley in the culture of the river in series from the representative of the world's culture, customs, the world's River named. Project to the point and face, in the way of leisure ecological entertainment will endowment, wedding, sports, theme business and other industrial depth of the system, the formation of the theme of entertainment to pull the city area of the southwest model. With a low investment, high experience, light entertainment, heavy eco sustainable development mode to lead the theme of the entertainment industry network upgrade 2.



重庆 - 世界之河风情度假区

THE RIVER OF THE WORLD FOLKLORE RESORT, CHONGQING

常州 - 新龙森林公园

XINLONG FOREST PARK, CHANGZHOU

项目地点: 江苏常州
项目面积: 140 公顷
Location : Changzhou Jiangsu
Landscape Area : 140 ha

项目概况

新龙森林公园定位为生态郊野森林公园, 即常州植物园, 方案结合上位规划, 合理嵌入活动体验项目, 通过“景+乐+节+禅+宿”, 打造以动植物观赏、乐活体验、休闲度假于一体的快乐森林公园。

Xinlong Forest Park is positioned as a country ecological forest park, i.e. Changzhou Botanical Garden, the scheme combines the master planning, reasonable embedded in the active project experience, through the "King + Le + Festival + Zen + Su, build in plants and animals to watch, live music experience, leisure in one of the happy forest Park.



浙江 - 儿童公园 RCHILDREN'S PARK, ZHEJIANG

湖州 - 南浔儿童公园 NANXUN CHILDREN PARK, HUZHOU

海南 - 富力月亮湾儿童乐园 R&F MOONBAY CHILDREN'S PARK, HAINAN



山东 - 日照生态公园 RIZHAO ECO PARK, SHANDONG





文旅设计工作二室
CULTURE AND TOURISM
DESIGN STUDIO ||

室内设计案例 INTERIOR DESIGN CASE

BUSINESS SCOPE 业务范围

室内主题乐园项目 INDOOR THEME PARK

- 上海万达汽车乐园 Wanda Automobile Theme Park, Shanghai
- 青岛万达室内主题乐园 Wanda Indoor Theme Park, Qingdao
- 南京万达室内主题乐园 Wanda Indoor Theme Park, Nanjing
- 乐和乐都主题公园度假群熔岩之城 Locajoy Lava City, Chongqing
- 包头万达宝贝王 Wanda Children's Playground, Baotou
- 沈阳国瑞机器人未来世界 Glory Robot Entertainment Hall, Shenyang
- 北京国瑞机器人驿站 Glory Robot Station, Beijing
- 常州恐龙园恐龙宝贝梦幻庄园 Dino Town Dinosaur Kingdom, Changzhou
- 鹰潭龙虎山逍遥城 Longhu Mountain, Yingtan
- 天津蓟县水世界 Jixian Yuan Dynasty Water World, Tianjing
- 重庆乐和乐都爱斯基摩村冰雪世界 locajoy Theme Park Eskimo Village, Chongqing
- 厦门诚毅科技馆 Xiamen Chengyi Science and Technology Museum
- 北京V观世界 V View of the World, Beijing
- 苏州工业园区体育中心 Sports Center in Industrial Park
- 惠州和天下T-STAR时尚假日广场家庭娱乐中心 T-STAR Fashion Holiday Plaza FEC, Huizhou
- 东城室内亲子乐园 Dongcheng Parent-kid Entertainment Indoor Park
- 福州泰禾奇幻世界家庭娱乐中心 Portal of Wonder : Thaiho FEC
- 富力红树湾湿地博物馆 R & F Mangrove Bay Wetland Museum
- 航天主题乐园 Arospace Theme Park
- 湖南恒广欢乐世界 Hunan Heng Guang Joy World
- 北京中弘六佰本室内主题乐园 Zhonghong Indoor Theme Park, Beijing

- 南京万悦城室内主题乐园 Nanjing Wanyue City Indoor Theme Park
- 鄂尔多斯-罗丽尔欢乐园 Erdos - Laurier joy park
- 信阳阳光城奇美游乐场 Sunshine city Qimei Amusement, Xinyang

海洋馆项目 AQUARIUM

- 沈阳国瑞科技艺术海洋馆 glory technology art aquarium, shenyang
- 日照海洋馆 aquarium, rizhao
- 厦门金都海底花园 Xiamen Jindu Submarine Garden
- 长沙游乐王国海底花园 Changsha Amusement Kingdom Submarine Garden
- 漳州双鱼岛海底花园 Zhangzhou Beas Island submarine garden

主题餐饮、主题商业及其它 THEME RESTAURANT BUSINESS AND OTHERS

- 西安中核长安印 Zhonghe Chang'an yin, Xi'an
- 北京中弘六佰本商业街 Beijing Zhong Hong Liubaiben Commercial Street
- 苏州华谊兄弟影城商业餐饮设计 Design of Suzhou Huayi Brothers Studios Commercial Dining
- 青岛万达室内主题乐园商业餐饮设计 Qingdao Wanda Commercial Catering Design
- 兰州恐龙园商业餐饮设计 Commercial Restaurant Design of Lanzhou Dinosaur Park
- 海南富力红树湾 R&F Mangrove Bay, Hainan
- 湖州儿童公园 Huzhou Children's Park
- 南昌茵梦湖北纬30°主题乐园 Nanchang Yinmeng Lake 30° latitude theme park

传统室内设计 TRADITIONAL INTERIOR DESIGN

- 宁波中青文化广场室内设计 Interior Design of Ningbo Zhongqing Culture Square
- 苏州华谊兄弟影城室内设计 Interior Design of Suzhou Huayi Brothers Studios

室内主题乐园
INDOOR THEME PARK

水公园
WATER PARK

海洋馆
AQUARIUM

主题餐饮
THEMED RESTAURANT

主题商业
THEME BUSINESS

室内主题商业街
INDOOR THEME COMMERCIAL STREET

其他室内设计
OTHER INTERIOR DESIGN

设计流程简析 ANALYSIS OF DESIGN FLOW

通过对项目市场环境、项目背景、受众群体及当地文化等诸多因素进行分析，对项目主题方向、目标客群、产品构成及盈利模式等作出可行性推导建议。为业主对项目的开发运营提供决策依据。

We analyze the project's theme direction, development goal, construction scale, construction content, target customer group, investment, investment and so on through the data analysis of the political, economic environment, historical culture, traffic, market environment, Profit model to make a feasibility study. For the owners of the project development and construction to provide decision-making basis.

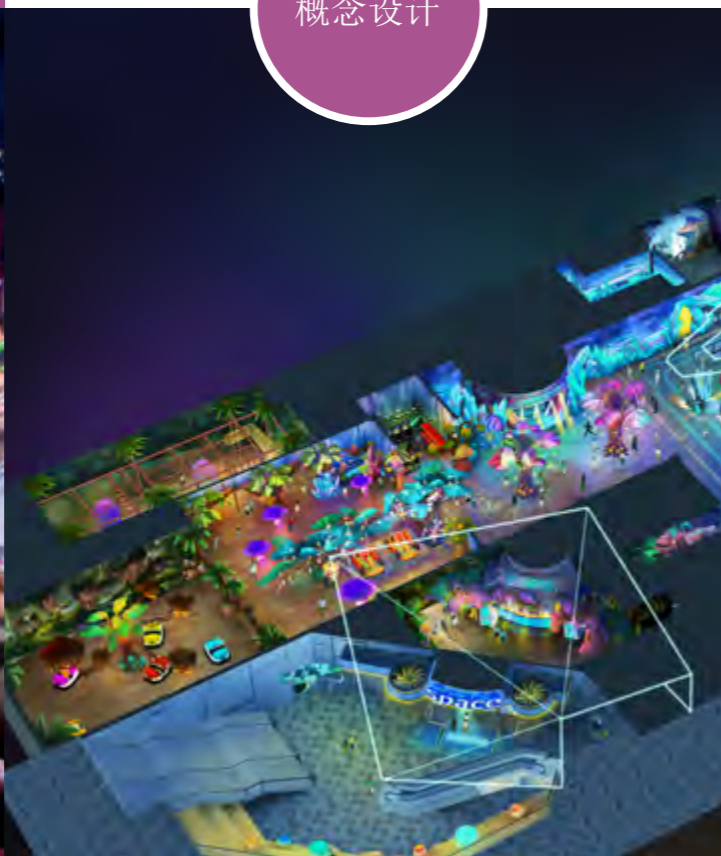
概念策划



根据策划设计中可行性分析得出的大数据，依托投资控制、用地现状、目标客群的定位等对红线范围内的设计内容进行控制性详细规划，我们将从运营的角度出发提供全面的落地性规划设计成果，其中包含项目主题故事、规划平面、鸟瞰效果、分区主题节点效果、投资估算等核心内容。

According to the planning data from the feasibility analysis of the design, relying on investment control, land status, targeting the target group on the red line within the scope of the construction of the control details of the plan, we will provide a full operational point of view landing Planning and design achievements, including the project theme story, planning plane, bird's-eye effect, sub-regional theme atmosphere effect, investment estimates, economic and technical indicators and other core content.

概念设计



方案设计是对概念规划设计的落地深化，我们将对项目范围内的主题包装、主题景观提出详细的方案图纸，并提交满足建筑结构设计需求的设计，同时满足项目报规的需要。在综合考虑运营落地及投资的基础上完美实现概念效果。

Project design is the deepening of the concept of planning and design of the floor, we will project the theme of packaging, the theme of the proposed landscape plan detailed drawings, and submit architectural conditions to meet the structural requirements of architectural design, and meet the needs of the project regulations. In a comprehensive consideration of operational landing and investment on the basis of the concept to achieve the perfect effect.

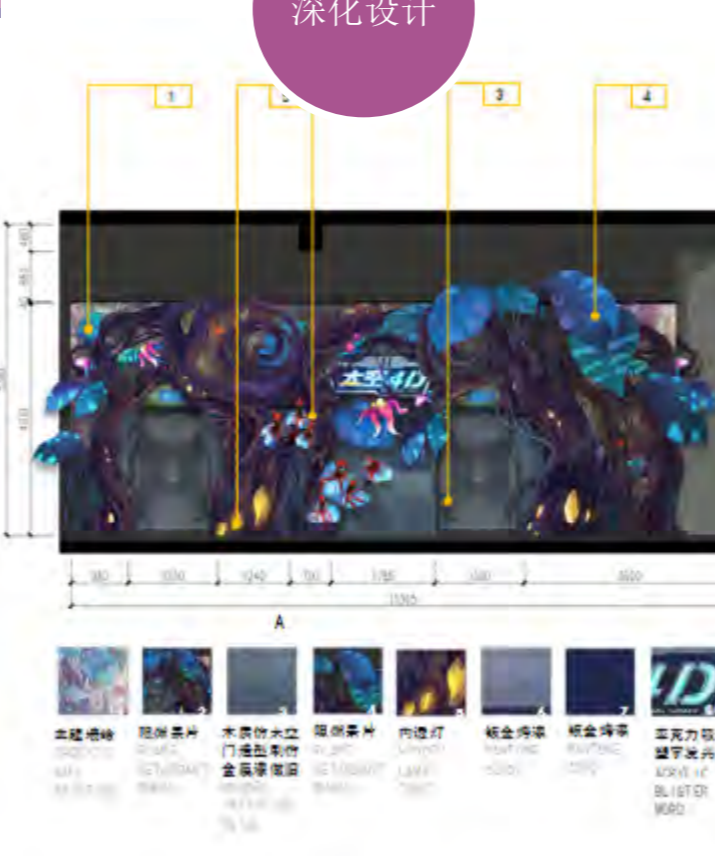
方案设计



深化设计是在与建筑、结构、机电、设备、灯光及其它相关专业单位的协调基础上对主题包装及景观方案进行尺寸及材质的落地性深入设计，此阶段我们将提供各方案元素的详细立面尺寸图、材料清单等。

Deepening the design is in-depth design of the theme packaging and landscape plan size and material on the basis of coordination with the building, structure, electromechanical, equipment, lighting and other relevant professional units. At this stage, we will provide detailed plan elements Elevation drawings, bill of materials and so on.

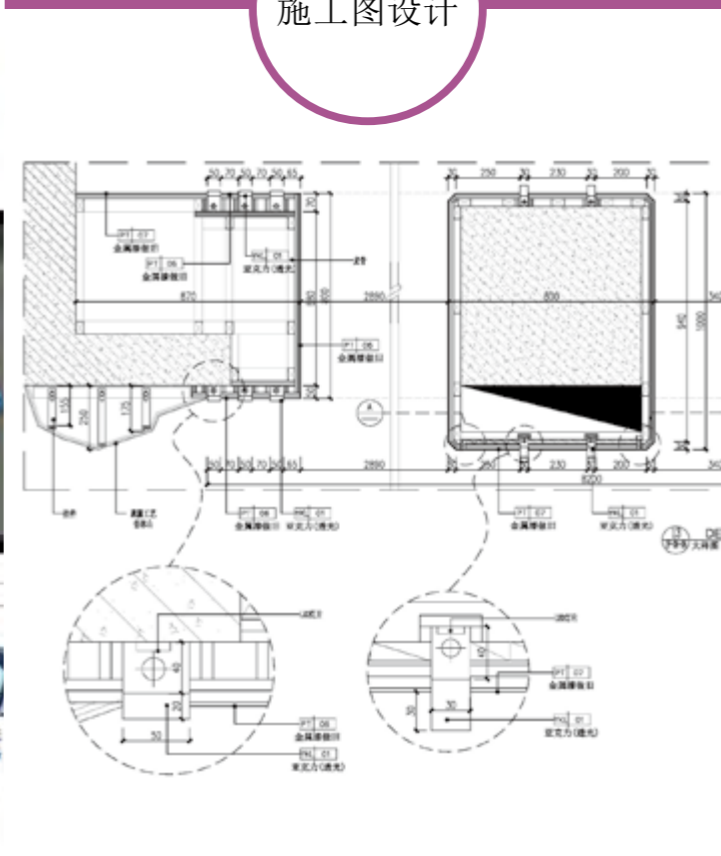
深化设计



圣景创筑具备经验丰富的主题艺术包装施工团队，这也是我们能够完美实现施工图纸设计的因素之一，施工图的设计旨在对各包装及景观元素的细节尺寸、材料及做法进行详细设计，确保方案设计效果与施工效果的高度统一。

With a team of experienced designers, this is one of the factors that enables us to realize the design of construction drawings. The drawings are designed to detail the details of the packaging and landscape elements, materials and practices. , To ensure that the effect of program design and construction of a high degree of unity.

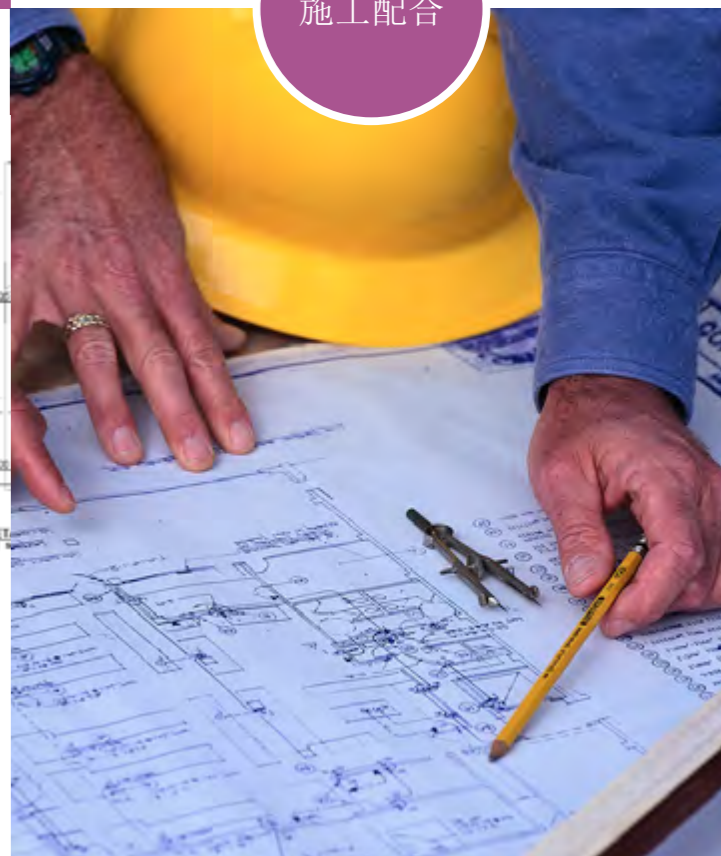
施工图设计



全面履行设计服务，施工期间积极配合业主做好全过程的技术服务工作，通过施工设计技术交底、设计代表现场服务等施工配合服务，为项目顺利施工提供保证。

Fully perform design services, actively cooperate with the owners during the construction of the whole process of technical services, construction design technology through the end of the design on behalf of on-site service and other construction services to provide a guarantee for the smooth construction of the project.

施工配合



室内主题乐园项目

INDOOR THEME PARK PROJECTS



项目地点：青岛
项目面积：30000m²
Location：Qingdao
Landscape Area：30000m²

青岛 - 万达室内主题乐园

WANDA INDOOR THEME PARK, QINGDAO

项目概况：

本项目是以机动型项目为主导的传统型主题乐园。以德国小镇风格打造家庭式城市主题娱乐中心。包装定位方面基于青岛的德式文化特色打造德式小镇结合园野风格进行包装设计。

Project Overview:

This project is a traditional theme park dominated by motorized projects. Build a family-style city theme entertainment center in German town style. Packaging positioning based on the characteristics of Qingdao's German culture to create a German town with a combination of garden style packaging design.



重庆 - 乐和乐都熔岩之城

LOCAJOY LAVA CITY, CHONGQING

项目概况：

上海万达汽车乐园项目位于上海青浦万达茂内的2-3层，总设计面积10000m²，本项目进行了针对性的游玩项目设计，业主方对消费群设定为以青年及青少年游客作为核心目标游客，以家庭游客为补充的消

Project Overview:

The project was targeted to the development of the project design, the core consumer group aim at children and teenager tourists, and the family visitors as supplement consumer. Based on aspects of the architectural space conditions, the audience and the product positioning, take a comprehensive consideration. Around the car theme to start, through the theme of the car town space theme of the partition set, according to different theme content to set zones. In the atmosphere set with the primary and secondary sound and light electrical means and experience



项目地点：重庆
项目面积：18400m²
Location：Chongqing
Landscape Area：18400m²



南京 - 万达 室内主题乐园

INDOOR THEME PARK,
NANJING WANDA

项目地点: 南京
项目面积: 34000m²
Location: Nanjing
Landscape Area: 34000m²



厦门 - 诚毅 科技体验中心

SCIENCE AND TECHNOLOGY EXPERIENCE CENTER,
XIAMEN CHENGYI

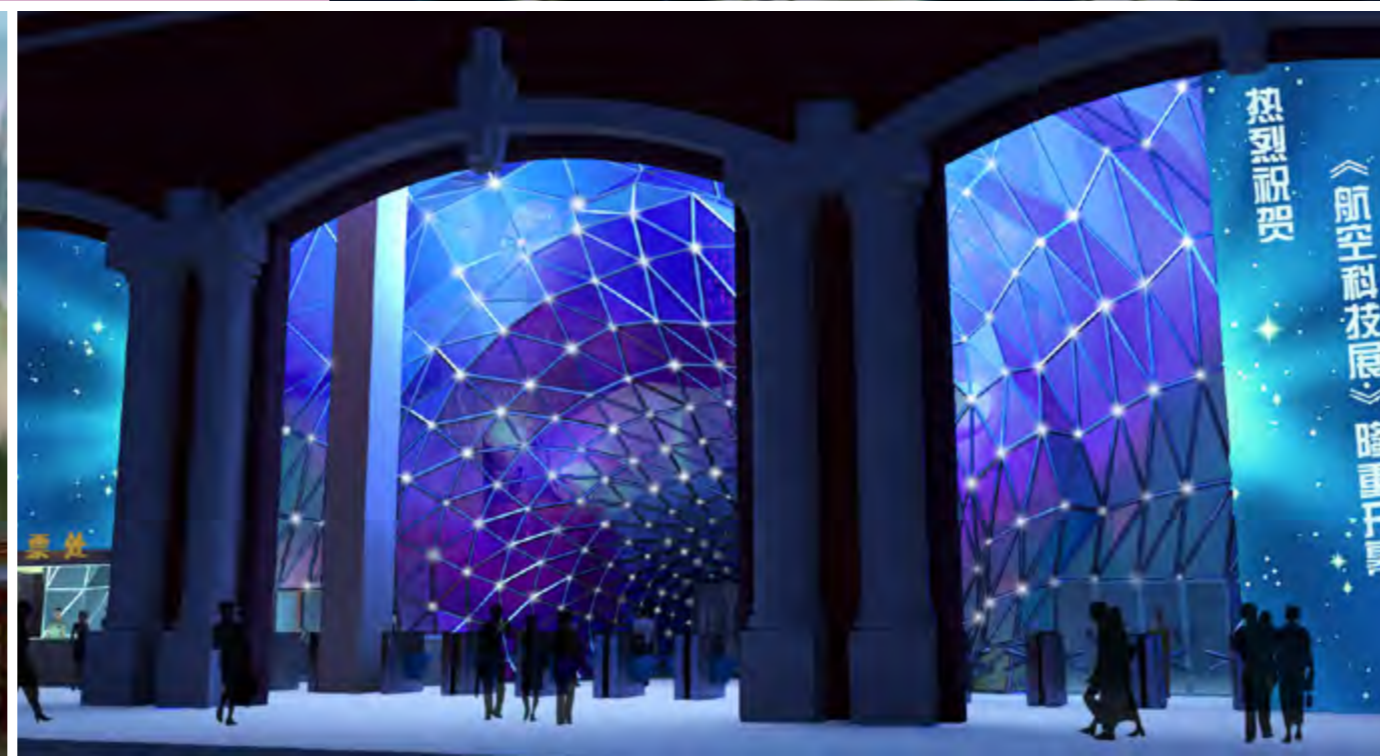
项目地点: 厦门
项目面积: 55000m²
Location: Xiamen
Landscape Area: 55000m²



天津 - 蓟县 元古水世界

JIXIAN YUAN DYNASTY
WATER WORLD, TIANJING

项目地点: 蓟县
项目面积: 40000m²
Location: Jixian
Landscape Area: 40000m²





沈阳 - 国瑞机器人未来世界 GLORY ROBOT ENTERTAINMENT HALL, SHENYANG



北京 - 国瑞机器人驿站 GLORY ROBOT STATION, BEIJING



北京 - 国瑞机器人儿童之家 GLORY ROBOT CHILDREN'S HOME, BEIJING



常州 - 恐龙园恐龙宝贝梦幻庄园 DINO TOON DINOSAUR KINGDOM, CHANGZHOU



鹰潭 - 龙虎山逍遥城 LONGHU MOUNTAIN, YINGTAN



重庆 - 乐和乐都爱斯基摩村 LOCAJOY ESKIMO VILLAGE, CHONGQING



中部野生动物园 CENTRAL WILD ZOON

海洋馆项目 THEMED RESTAURANT

结合实体海洋、科技互动、声光电、艺术海洋馆等新型海洋馆形态植入，以更丰富体验方式展现海洋馆的魅力，并完美的将科普教育融于互动体验中，告别传统海洋馆“走马观花”式的观览体验模式，增设交流互动体验空间，给消费者提供一个全新的极具视觉体验、沉浸式深海交流互动体验中心。

This project combines the physical ocean science and technology interaction, acousto-optic electricity, art aquarium and other new aquarium shape implantation, a more rich experience to show the charm of the aquarium, and the perfect integration of popular science education interactive experience, bid farewell to the traditional aquarium "Fly" type of viewing experience mode, and additional interactive experience space, to provide consumers with a new visual experience, immersive deep-sea exchange and interactive experience center.



沈阳 - 国瑞科技艺术海洋馆 GLORY TECHNOLOGY ART AQUARIUM, SHENYANG

项目地点：沈阳
项目面积：12000m²
Location : Shenyang
Landscape Area : 12000m²



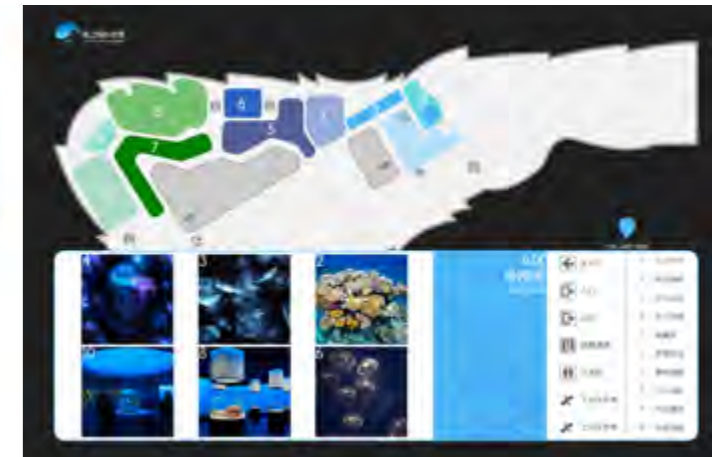
日照 - 海洋馆 AQUARIUM, RIZHAO

项目地点：日照
项目面积：26000m²
Location : Rizhao
Landscape Area : 26000m²



厦门 - 金都美之海海底花园 JINDU SUBMARINE GARDEN, XIAMEN

项目地点：厦门
项目面积：3000m²
Location : Xiamen
Landscape Area : 3000m²



主题餐饮、商业及其他

THEME CATERING, BUSINESS AND OTHERS

项目案例

青岛万达室内主题乐园商业餐饮设计、兰州恐龙园商业餐饮设计、北京中弘六佰本商业街、海南富力红树湾商业餐饮设计、湖州儿童公园商业餐饮设计、山东广饶孙子文化园商业餐饮设计.....

Project Case

Qingdao Wanda indoor theme park commercial dining design, Lanzhou dinosaur park commercial dining design, Beijing Zhonghong six Bai commercial street, Hainan R & F mangrove Bay commercial dining design, Huzhou children's park commercial dining design, Shandong Guangrao Sunzi Cultural Park commercial catering design.



传统室内设计

TRADITIONAL INTERIOR DESIGN

项目案例

苏州 - 华谊兄弟影城办公室设计、宁波 - 中青文化广场.....

Project Case

Huayi brothers movie world indoor design, Zhongqing cultural square, Ningbo.....



主题包装工程施工
**DECORATION CONSTRUCTION
FOR THEME PARKS**

工程案例 CONSTRUCTION CASE

中华恐龙园 - 恐龙宝贝梦幻庄园

China Dinosaurs Park-Dino Town

江苏 - 常州环球动漫嬉戏谷

Changzhou Global Animat Joyland, Jiangsu

淮南志高“泰坦方舟”主题公园

Chigo Sino Wounderland

万达西双版纳主题乐园 - 茶马古道 (TH) 区

Wanda Xishuangbanna Theme Park, Tea and Horse District

哈尔滨万达主题乐园 - 哈市大集

Harbin Wanda Theme Park, Harbin Market

东方盐湖城 - 坤院

East Salt Lake City, Earthly Garden

华谊兄弟电影世界 - 非诚勿扰区

Huayi Brothers Movie World, If You Are The One

BUSINESS SCOPE

业务范围

主题城镇
THEME CITIES AND TOWNS

主题公园
THEME PARKS

主题社区
THEME COMMUNITY

主题商业
THEME MALLS

生态旅游度假区
ECO TOURISM RESORT

城市娱乐综合体
CITY ENTERTAINMENT COMPLEX

其它旅游度假区以及大型城市文化广场
OTHER TOURIST RESORTS AND LARGE CITY
CULTURAL SQUARE

专业施工工艺

PROFESSIONAL CONSTRUCTION TECHNOLOGICS

工艺流程 地面处理 — 铺放基础砂 — 修整抹平砼表面 — 撒第一遍底层着色强化料 — 压实抹平彩色表面 — 撒第二遍底层着色强化料 — 抹平收光彩色表面 — 根据干湿程度喷撒粘结合剂 — 撒防滑层聚合强化料 — 表面色彩及造型 — 养护 — 清洗表面 — 上封闭保护剂 — 交付使用

艺术压膜地面



工艺流程 剖析雕塑文化背景、理解设计意图 — 雕塑泥稿制作 — 雕塑翻模 — 雕塑上色 — 雕塑安装。

玻璃钢雕塑



工艺流程 充分理解塑石设计风格 — 造型骨架焊接 — 塑石造型圆钢骨架焊接 — 钢丝网绑扎 — 塑石造型水泥底层抹灰 — 塑石面层基本造型雕刻 (2遍) — 塑石颜色施工。

水泥塑石



工艺流程：充分理解仿木设计风格及年轮 — 造型骨架焊接 — 造型圆钢骨架焊接 — 钢丝网绑扎 — 造型水泥底层抹灰 — 仿木面层基本造型雕刻 — 仿木颜色施工。

水泥仿木



工艺流程 充分理解仿生土设计风格及年轮 — 造型圆钢骨架焊接 — 钢丝网绑扎 — 造型水泥底层抹灰 — 仿生土面层基本造型雕刻 — 仿生土颜色施工。

水泥塑艺术
仿生土



其它工艺：屋面茅草、铝镁锰屋面瓦、张拉膜、GRC、EPS、铝合金仿木、外墙涂料等工艺。

其它专业工艺





中华恐龙园 - 梦幻庄园

CHINA DINOSAURS PARK, DINO TOWN



常州环球动漫嬉戏谷

CHANGZHOU GLOBAL ANIMAT JOYLAND

摩尔庄园区

MOLE'S WORLD



东方盐湖城 — 坤院

EASTERN SALTY LAKE CITY, EARTHLY GARDEN



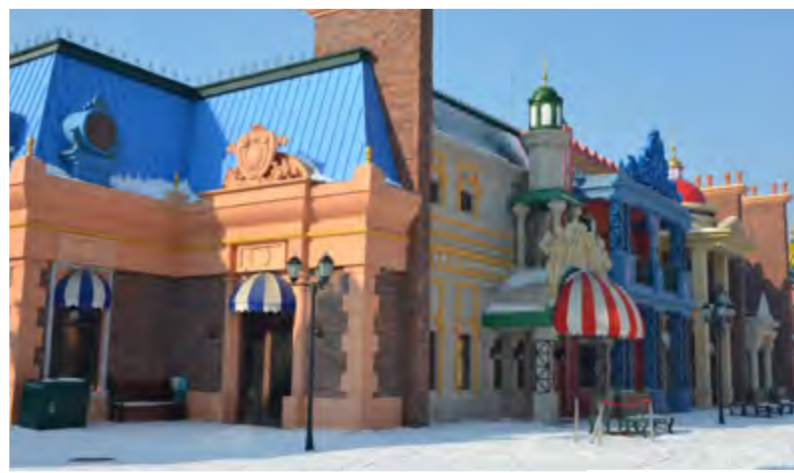
东方盐湖城 - 坤院景观 EASTERN SALTY LAKE CITY, EARTHLY GARDEN

万达西双版纳主题乐园 - 茶马古道区 WANDA XISHUANGBANNA THEME PARK, TEA & HORSE DISTRICT



万达西双版纳主题乐园 — 茶马古道区

WANDA XISHUANGBANNA THEME PARK, TEA & HORSE DISTRICT



哈尔滨万达主题乐园 - 哈市大集区

HARBIN WANDA THEME PARK,
COMMERCIAL STREET



华谊兄弟电影世界 | 非诚勿扰区

HUAYI BROTHERS MOVIE WORLD, IF YOU ARE THE ONE





 深圳圣景创境环境艺术设计有限公司



电话 TEL: +86-0755-21606600
传真 Fax: +86-0755-82760867
邮箱 E-mail: info@sjcz.com.cn
网址 Web: www.sjcz.com.cn

地址: 深圳市南山区兴华路6号南海意库6号楼508室
Add: Room 508 Bldg, Nanhaiyiku 6, Xinghua Rd, Nanshan Distr. Shenzhen, China